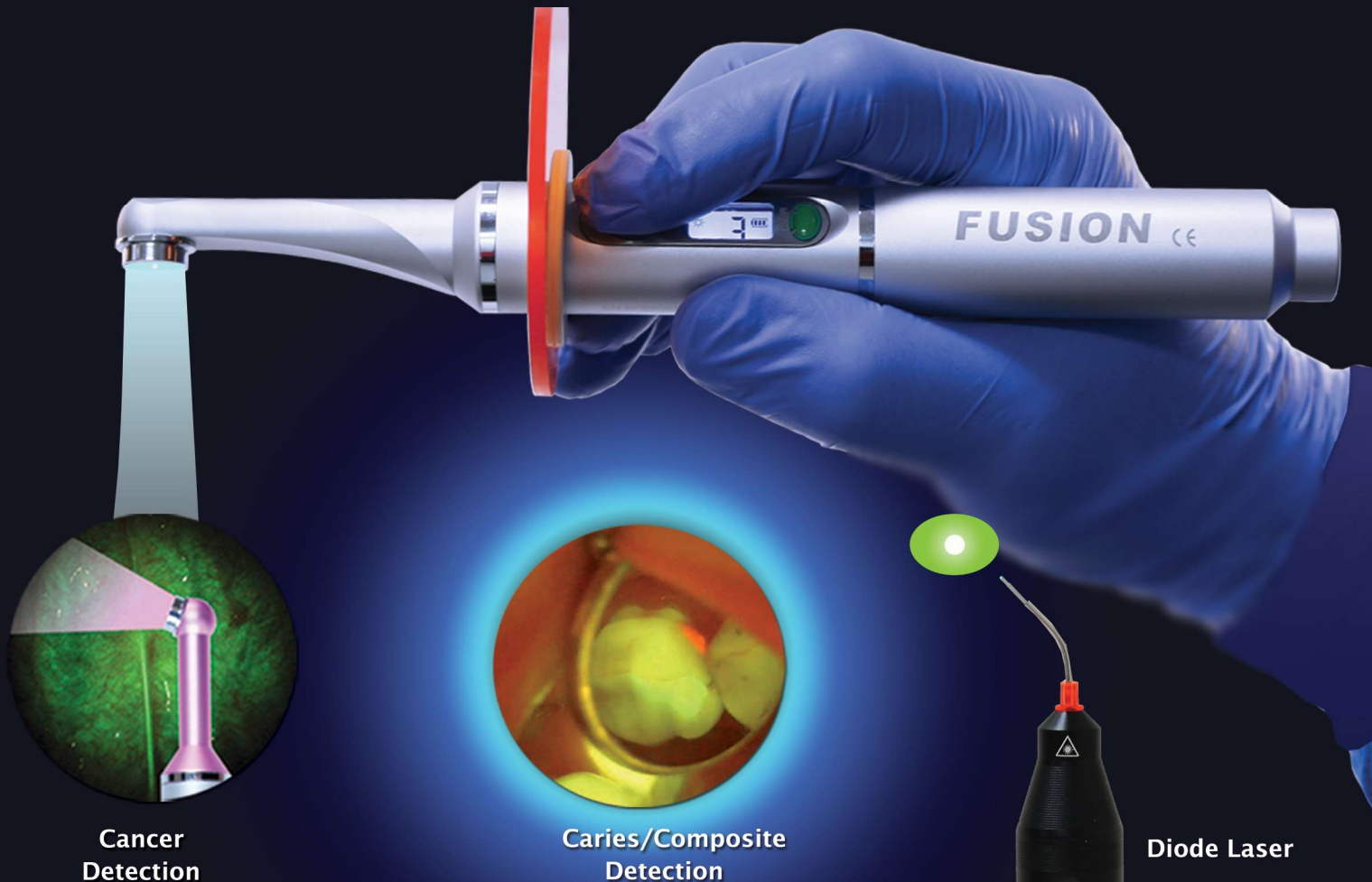


# Effortless & Wireless

Handheld Products that Make a Difference Everyday



**The Most Powerful and Dependable Platform!**

3 seconds cure and much more ...

A phenomenal company that consistently develops products to meet dentists needs, Dr. Howard Glazer

FUSION Curing Light is a 21st century light that is versatile, cost-effective, and valuable in everyday practice. Adding to the value is the ability to conduct oral cancer examination.

Dr. Howard Glazer

**DentLight**



# FUSION Platform

## Power in the Palm of Your Hand

- Unique focused beam and advanced backlit LCD display:
  - 4000 mW/cm<sup>2</sup> high power mode
  - 2000 mW/cm<sup>2</sup> low power mode
  - Built-in diagnostic and treatment modes
- Wide wavelength spectrum
  - 420 - 490nm (FUSION<sup>5</sup> and FUSION twinhead)
  - 385 - 490nm (FUSION Plus/Grand)
  - 660/810nm (PDT/PBM)
- Smart Lithium-Ion Battery You Can Count On!
  - 120+ minutes run time at constant output
  - Cordless with direct power plug backup
  - 90 minutes fast recharge time
- Slim and ergonomic modular design
  - 360 swivel light head
  - Easy upgrade and service parts
  - Common platform for Ultrafast laser upgrades

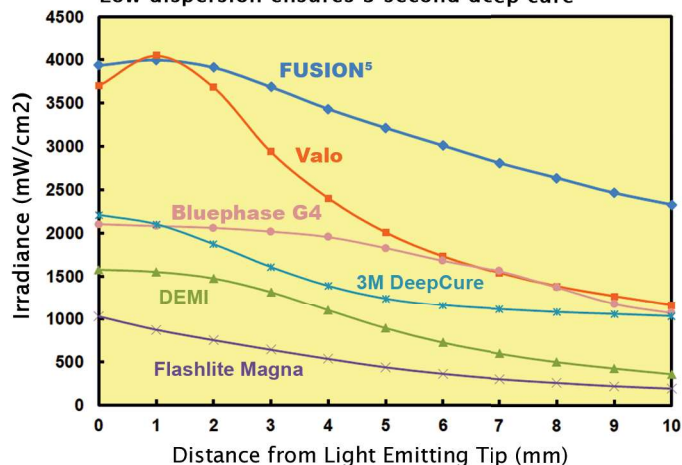


### Built to Last

Drop-proof aircraft aluminum construction

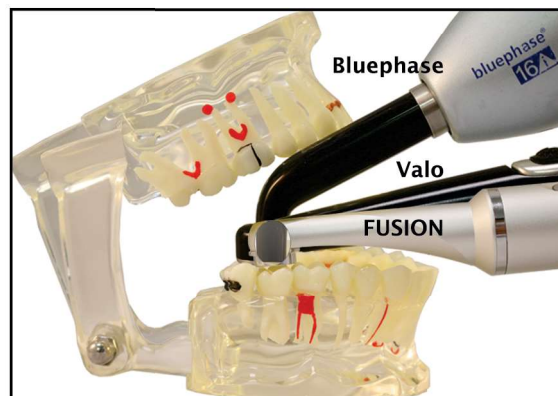
### Focused Beam

Low dispersion ensures 3 second deep cure



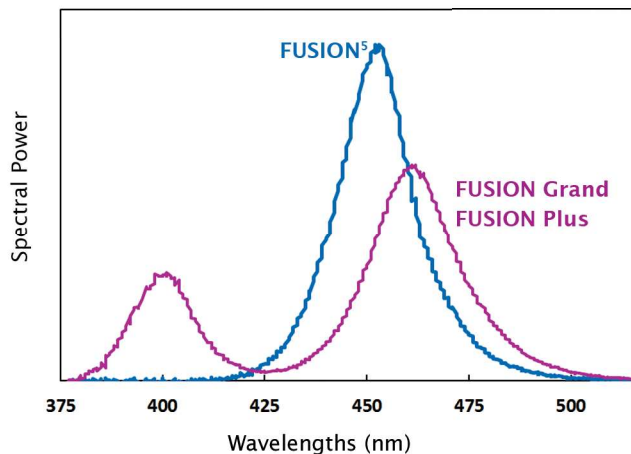
### Lowest Profile

Small 90° head ensures the most patient comfort

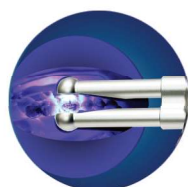


Unmatched Accessibility

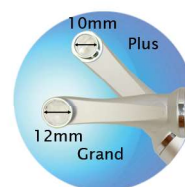
### Optical Spectrum



Add-on Functions  
with Interchangeable Head



Twinhead for bulk cure  
PN 7810060



FUSION Grand/FUSION Plus  
7830060/7820060



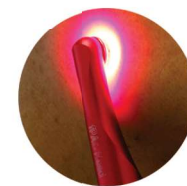
Ultrafast Laser  
7300100



Caries/Cancer Detection  
PN 7500152



Transillumination  
7800060W



PDT/PBM  
7800060RIR



# DOE Diagnostics

## Dental Exam made easier

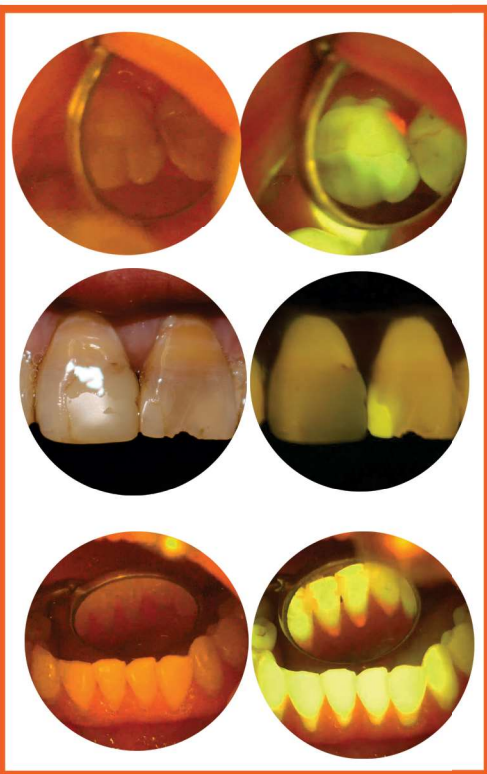
### See the Invisible

Interchange to a violet head expands FUSION to high contrast fluorescence imaging. Empower users to visualize more than meets the eye with:

- Orange fluorescence goggle or shield for caries, composites, and plaque detection.
- Green fluorescence goggle or shield for soft tissue early cancer screening.

### See the Difference

Fluorescence is caused by the absorption of one wavelength followed by the emission of a different wavelength creating a contrast that you can clearly identify.



#### Dental Caries and Decays

Red fluorescence is emitted from cariogenic bacteria in caries and decays under violet head illumination and can be directly observed using orange fluorescence goggle or shield.

#### Composites and Adhesives

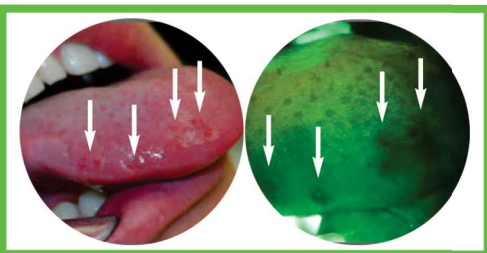
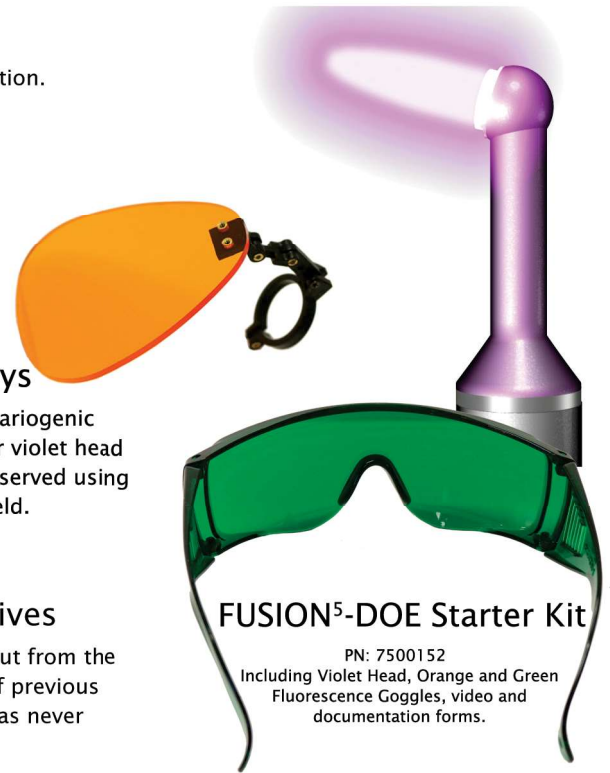
Composites and adhesives stand out from the natural tooth structure. Removal of previous restorations or excess adhesives has never been easier.

#### Active Plaque

Active plaque and bacteria are visually identified for easier removal.

#### Early Detection - Save Lives

Use green fluorescence goggle or shield to detect severe epithelial dysplasia. Loss of fluorescence or dark spot provides early stage signs of oral cancer. Save lives by detecting abnormality 3 to 4 years before naked eyes can see it.



## PBM and PDT Treatment

### Photobiomodulation and Photodynamic Therapy

Dual wavelengths 630nm and 810nm  
Controlled dosage with deep penetration  
400 mW focused power for fast treatment  
Induced biostimulation or bioinhibition  
Reduction of pain and inflammation

Stimulate tissue repair-movement  
Increased circulation for faster healing  
Reduced need for post-op analgesics  
Reduced Probability of dry socket  
Prevention of aphthous ulcers and lesions



# FUSION S7 Curing Light

Powerful

Portable

Phenomenal

Collimated LED Beam  
1300 mW/cm<sup>2</sup>  
10mm large tip size

Slim Ergonomic

Smart Indicator

Easy Activation Button

Solid Metal Body

Shock-proof reliability  
Sturdy aluminum body  
Light-weight 110 grams

Smart Li-Ion Battery  
Rechargeable & Replacable

Charging Stand

Solid metal table-top charge base

Actual Size





# Ultrafast Dental Laser

## Wireless is Effortless

Amazing Laser for Everyday Practice

*No More Setup Time and Messy Cords*

3W Continuous Power

5W Pulsed Power



### Make it Ultrafast

**Hemostasis**

**Frenectomy**

**Gingivectomy**

**Incision & Excision**

**Root Canal Therapy**

**Canker Sores / Aphthous Ulcers**

**Periodontal Sulcular Debridement**

**Gingival Troughing for Impression**

# Ultrafast Dental Laser

## Amazing Power at Your Fingertips

### Wireless Powerful Design

- Up to 3W CW Power for ultrafast soft tissue sculpting
- Up to 5W Pulsed Power for precision cutting
- 810nm wavelength for advanced performance

### Making it Easy

- Distinctive green aiming beam - higher contrast making it easier to see the treatment spot
- Unique Laser Shield
  - Automatic Eye Protection for Operators (including Loupe)
- Disposable Fiber tips are:
  - o Time-saving
  - o Self-bendable
  - o Avoid cross-contamination

### Super Slim and Ergonomic

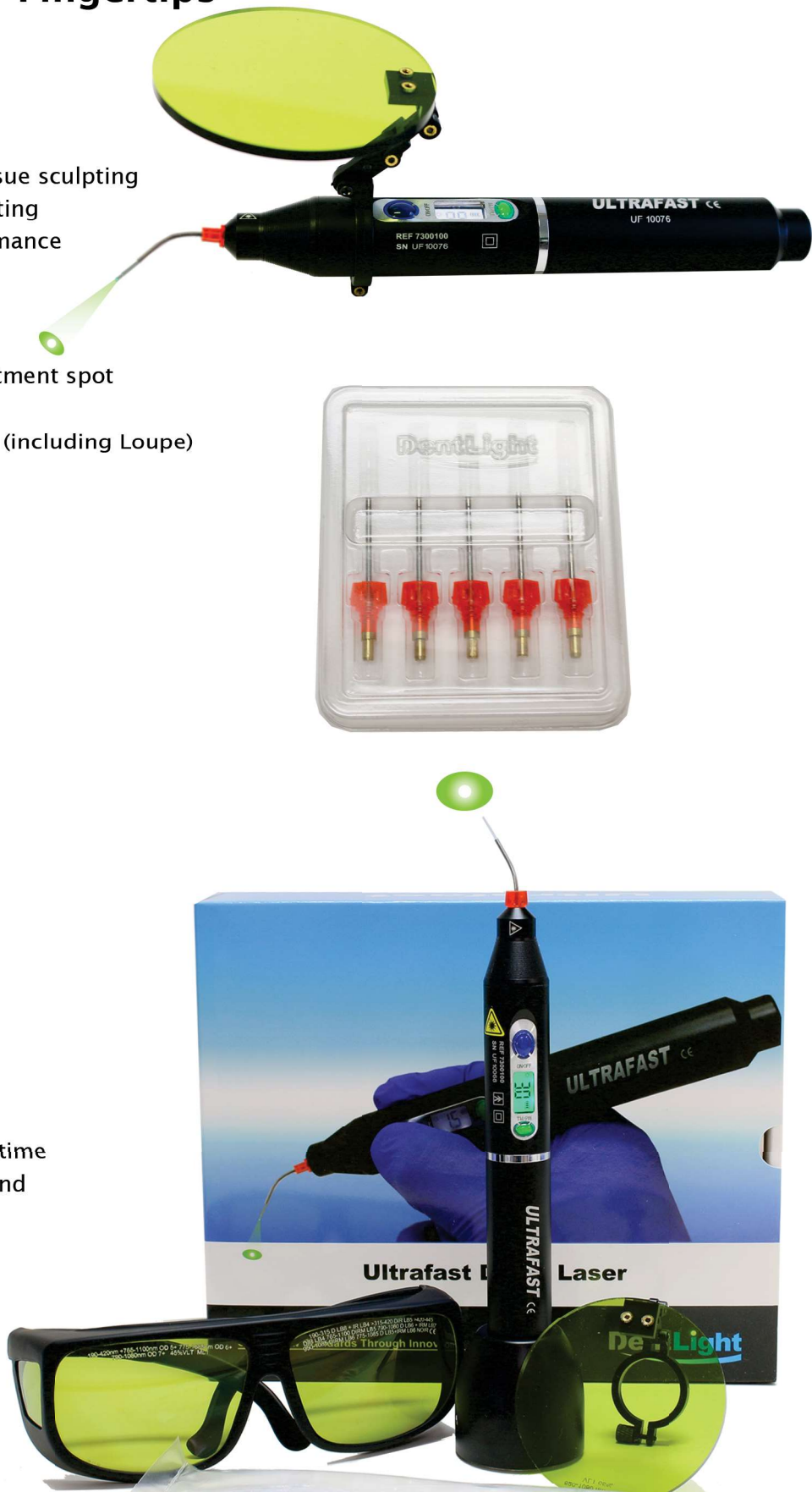
- Only weighs 3.5oz
- Measures at 6.4 inch

### Built to Last

Aircraft aluminum durable construction distributes heat, prevent scratches, discoloration and damage from accidental falls.

### Smart Lithium Battery

- 45+ minutes run time at nominal power
- 90 minutes fast recharge time
- Constant output throughout battery run time
- Charges directly or through charging stand
- Compatible with FUSION curing lights





# PROFIT FROM the Award-winning Wireless platform

## Order Information

### Kit Options

**PN:7800080 FUSION<sup>5</sup> Curing Light Kit**

Including Standard Handpiece, Charging Stand, Curing Caps (tacking, 9mm and 13mm), Power Adapter, Light Shield, Barrier Sleeves (100), and Instructions for Use.

**PN:7820080 FUSION Plus Curing Light Kit**

Including Plus Handpiece, Charging Stand, Curing Caps (tacking, 9mm and 13mm), Power Adapter, Light Shield, Barrier Sleeves (100), and Instructions for Use.

**PN:7830080 FUSION Grand Curing Light Kit**

Including Plus Handpiece (12mm lens), Charging Stand, Power Adapter, Light Shield, Barrier Sleeves (100), and Instructions for Use.

**PN:7500080-S7S FUSION S7 Curing Light Kit**

Including S7 Handpiece, Charging Stand, Power Adapter, Light Shield, Barrier Sleeves (100), and Instructions for Use.

**PN:7910080 FUSION PBM Light Kit**

Including PBM Handpiece with dual 660 & 810 wavelengths, Charging Stand, Power Adapter, Light Shield, Barrier Sleeves (100), and Instructions for Use.

**PN:7300100 Ultrafast Diode Laser Kit**

Including Laser Handpiece, Charging Stand, Disposable Fiber Tips (5), Barrier Sleeves (50), Power Adapter, Laser Shield, and Laser Goggles (2).

### Combo Kit Options

**PN:7300100 FUSION-DOE Kit**

Including FUSION<sup>5</sup>, Violet Light Head, Green and Orange Fluorescence Goggles, Curing Caps, Charging Stand, Power Adapter, Barrier Sleeves, and Training guide.

**PN:7700111 DOE SE Kit**

Including DOE SE handpiece, Green and Orange Fluorescence Goggles, Charging Stand, Power Adapter, Barrier Sleeves, and Training guide.

### Add-on Options and Accessories

7500152 FUSION-DOE starter Kit

7700192 Orange Fluorescence Shield

7700092 Green Fluorescence Shield

8500123 Green Fluorescence Goggle

7500088 Orange Fluorescence Goggle

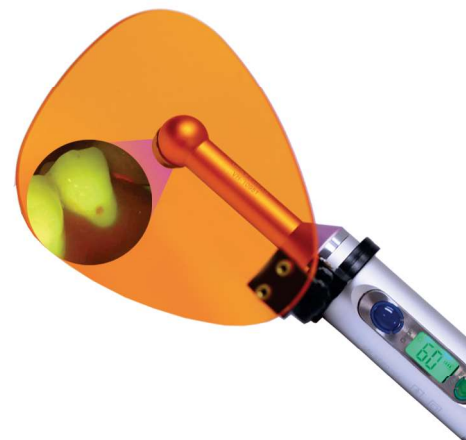
7300192 Ultrafast Fiber Optic Tips (25/pk)

7300088 Laser Goggles

7500060U Violet Light Head

7500082 Barrier Sleeves (100/pack)

7800060RIR PBM Dual Wavelengths Head



**DentLight**

1825 Summit Ave. #210  
Plano TX 75074  
Tel: 972-889-8857  
Email: [sales@dentlight.com](mailto:sales@dentlight.com)  
[www.dentlight.com](http://www.dentlight.com)