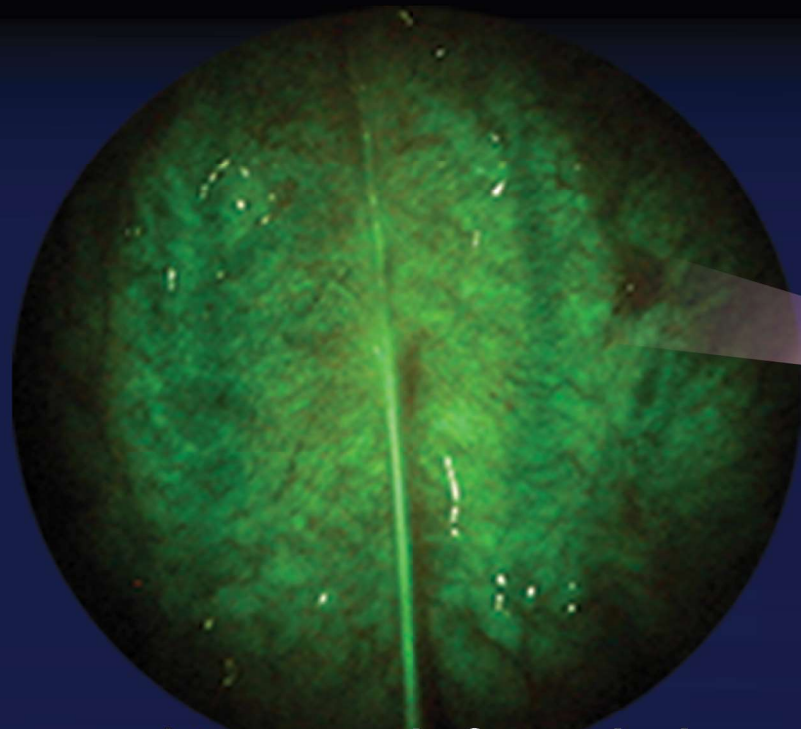


ORAL HEALTH IS ALL ABOUT EARLY DETECTION AND PREVENTION



It is our responsibility!

3 to 4 years before naked eye

- Small yet powerful fluorescence imaging system
- Affordable and mostly covered by insurance
- Early detection saves lives!
- No need of rinsing the mouth
- High-contrast fluorescence viewer
- Patent-pending LED Beam technology
- Intraoral and extraoral access from small size
- Detect both HPV and traditional virus associated cancer

Insurance Code: D0431



DOE

DENTAL ORAL EXAM SYSTEM



DentLight

DOE Diagnostics

Dental Oram Exam made easier

See the Invisible

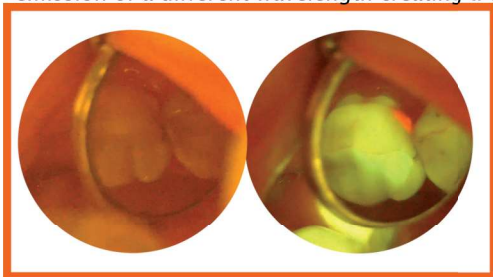
Violet head generate high contrast fluorescence imaging through high power uniform illumination and high contrast fluorescent filters.

Empower users to visualize more than meets the eye with:

- Orange fluorescence goggle or shield for caries, composites, and plaque detection.
- Green fluorescence goggle or shield for soft tissue early cancer screening.

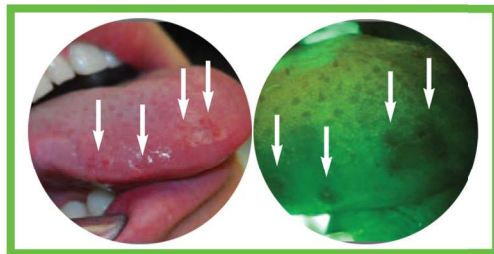
See the Difference

Fluorescence is caused by the absorption of one wavelength followed by the emission of a different wavelength creating a contrast that you can clearly identify.



Dental Caries and Decays

Red fluorescence is emitted from cariogenic bacteria in caries and decays under violet head illumination and can be directly observed using orange fluorescence goggle or shield.



Early Detection - Save Lives

Use green fluorescence goggle or shield to detect severe epithelial dysplasia. Loss of fluorescence or dark spot provides early stage signs of oral cancer. Save lives by detecting abnormality 3 to 4 years before naked eyes can see it.



FUSION⁵-DOE Starter Kit

PN: 7500152
Including Violet Head, Orange and Green
Fluorescence Goggles, video and
documentation forms.

Uniform Beam Projection

Uniform beam profile enables best illumination and excitation of fluorescence. Intra and Extra oral cavity access for early detection of both traditional and HPV virus associated oral cancer as well as early dental caries.

Minimum Disposable Cost

Coming with disposable barrier sleeves and easy disinfection with regular disinfectants.

Easy Documentation

Optional Camera Filter compatible with all major office cameras and recording devices easily integrated with standard practice for oral exam documentation and insurance filing.

Training

Coming with training guides and starter documents, you are ready to go in five minutes after receiving your kit!

Non-memory Li-Ion Battery You can Count On!

- 120 minutes run time; 90 minutes from empty to full charge.
- Multiple charge options
 - Space saving counter stand
 - Direct plug in
 - Chair side charge holder
- Secondary charge indicator
- Constant output throughout battery run time



Attract New Patients

-> Add Oral Screening

Unparalleled FUSION Platform - Beyond Exam

Power in the Palm of Your Hand - High Speed

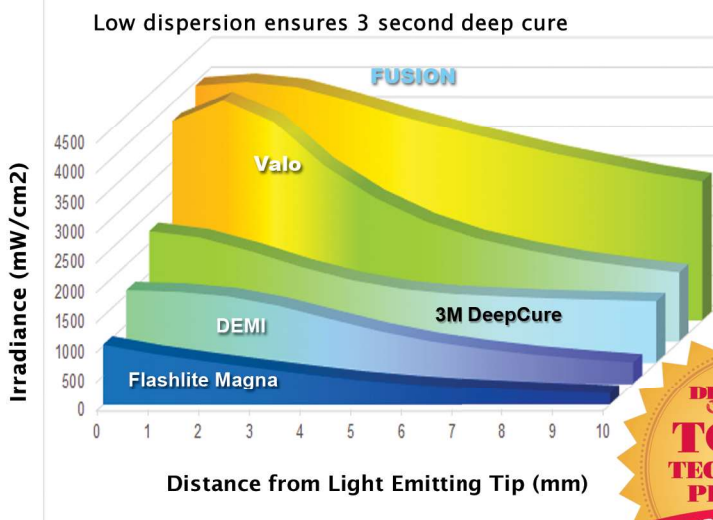
- Curing with unique focused beam:
 - 4000 mW/cm² high power mode
 - 2000 mW/cm² low power mode
 - Built-in diagnostic and treatment modes
- Wide wavelength spectrum
 - 420 - 490nm (FUSION⁵ and FUSION twinhead)
 - 385 - 490nm (FUSION Plus/Grand)
 - 660/810nm (PDT/PBM)
- Modular design with easy upgrade and service parts
- Cordless with direct power plug that eliminates downtime
- 90 minutes fast recharge time
- Slim and ergonomic



Smart Lithium-Ion Battery You Can Count On!

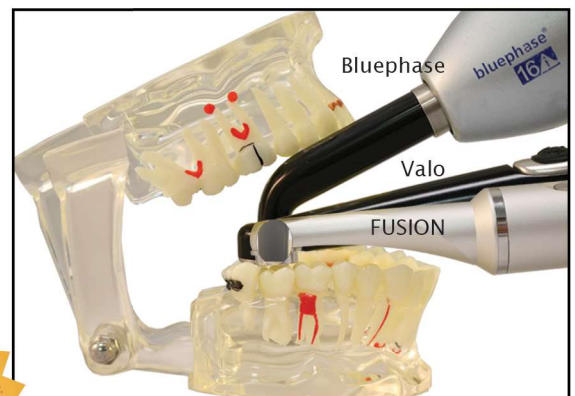
- Cordless with 120+ minutes run time at constant output
- Common platform for soft tissue laser upgrades

Focused Beam



Lowest Profile

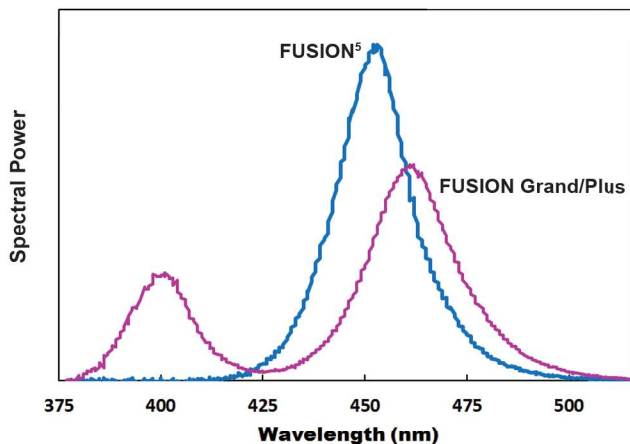
Small 90° head ensures the most patient comfort



Unmatched Accessibility



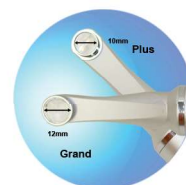
Optical Spectrum



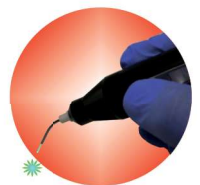
Add-on Functions



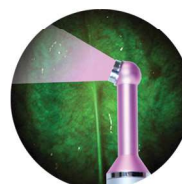
Twinhead for bulk cure
PN 7810060



Grand/Plus Head
7830060/7820060



Soft Tissue Laser
7300100



Caries/Cancer Detection
PN 7500152



Cracks/Canal Detection
7800060W



PDT/PBM
7800060RIR

PROFIT FROM the Award-winning DOE



Order Information

7700111 DOE SE Kit

Including DOE exam wand with violet light head, green and orange fluorescence goggle, charging stand, power adapter, 100 barrier sleeves and training guide and documentation.

7700512 FUSION-DOE Kit

Including FUSION 5, violet light head, green and orange fluorescence goggles, training guide plus documentation (patient consent and screening form)

7710010 DOE Deluxe Kit

Including FUSION 5 kit, violet and white light heads, two fluorescence goggles (for caries and cancer), charging stand, power adapter, two exam tips, one 9mm and one 13mm curing caps, 100 barrier sleeves training guide with patient consent and screening.

8500123 Green Fluorescence Goggle (cancer)

7500188 Orange Fluorescence Goggle (caries)

8500122 Loupe Fluorescence Filter Pairs

7500088 Patient Safety Goggle

7800060U Violet Light Head

7800060W White Light Head

7800060 FUSION Light Head

7500082 Barrier Sleeves (100/pack)

7701100 Camera Filter (58mm standard SLR with step adapters)



Dr. Howard Glazer, DDS, FAGD

"I have long been a fan of the Fusion for its power, ease of use and value for the nominal cost. Adding to the value is the ability to conduct oral cancer examination. I am a firm believer in and advocate for oral cancer prevention through early diagnosis and the DOE system is a very good way to conduct a fast and non-invasive examination "

DentLight