

YOUR PATIENT'S ORAL HEALTH IS YOUR MAIN CONCERN.

The Solution: **DOE™ Oral Exam System** by DentLight!

ORAL HEALTH IS ALL ABOUT EARLY DETECTION AND PREVENTION

Fluorescence and tissue reflectance technology have been proven successful in identifying soft tissue abnormalities. Healthy tissue fluoresces green. DOE Oral Exam System by DentLight pushes the technology envelope in helping dentists or hygienists to easily identify abnormal tissue that might develop into oral cancer at an affordable price. Annual Dentlight Oral Exam provides a comprehensive oral screening to give your patients a piece of mind. It is pleasant and fast, and could help save your patient's life.

The DOE System uses high power LED illumination and high contrast switching filter for oral exams beyond normal visualization capabilities.

FEATURES

- **Small, Cordless, and Reliable**
- **High-power Collimated LED Beam**
- **High Contrast Fluorescence Filter**
- **Multi-wavelength and Interchangeable LED**
- **Always ready without sleeping mode**
- **Modular with Multiple Functions**
 - Transillumination for dental caries and cracks
 - Options to upgrade to FUSION - the most powerful LED curing light
 - Composite viewing and cleaning
- **Priced under \$2,000**

DentLight Oral Health Examination System contains:

Cordless DentLight Oral Exam Wand with interchangeable violet and white light heads, universal 2.5x flip-up loupes with fluorescence filters, charging stand, charge adapter, patient protective eyewear, and 100 Barrier Sleeves.



Oral Lesion Under Violet Light



Manufacturer of the FUSION™ Curing Light



DentLight

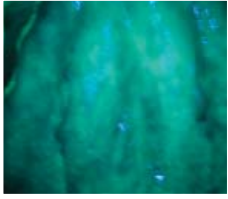
From Bright Minds Comes Bright Products™

800.763.6901

www.dentlight.com

sales@dentlight.com

DentLight™



Violet Light



White Light

Oral health is all about early detection and prevention. Fluorescence and tissue reflectance technology have been proven successful in identifying soft tissue abnormalities. Healthy tissue fluoresces green. DOE Oral Exam System by DentLight pushes the technology envelope in helping dentists or hygienists to easily identify abnormal tissue that might develop into oral cancer at an affordable price. Annual Dentlight Oral Exam provides a comprehensive oral screening to give your patients a piece of mind. It is pleasant and fast, and could help save your patient's life.

The DOE System uses high power LED illumination and high contrast switching filter for oral exams beyond normal visualization capabilities.

High-power LED and High Contrast Fluorescence Filter

Pushing the technology envelopes, Dentlight Oral Exam Light uses high power LED illumination and high contrast switching filter for oral exams beyond normal visualization capabilities.

Multi-wavelength and Interchangeable LED

Easily interchangeable LED head design enables multi-wavelength oral exam with white and violet light for best early determination of normal and malignant tissues and oral lesions.

Collimated Beam

Patent-pending collimated and uniform beam enables best illumination and excitation of fluorescence to avoid visual artifacts.

Constant Power

With unique heat sink technology and constant current LED driver, Dentlight Oral Exam Light maintains constant power throughout the battery run time allowing 20 patient exams in one full charge.

Small, Portable and Reliable

At the size of a normal handpiece, fully portable and with smart non-memory rechargeable battery, cooling design, and plug-start power driver, Dentlight Oral Exam Light works any time the doctors need it.

Integration and Multiple Functions

Dentlight Oral Exam Light comes with patent-pending integrated loupe filters and is compatible with digital cameras making it easily integrated with standard practice for oral exam and record keeping. Best of all, you can easily convert it into the most powerful LED curing light - FUSION.